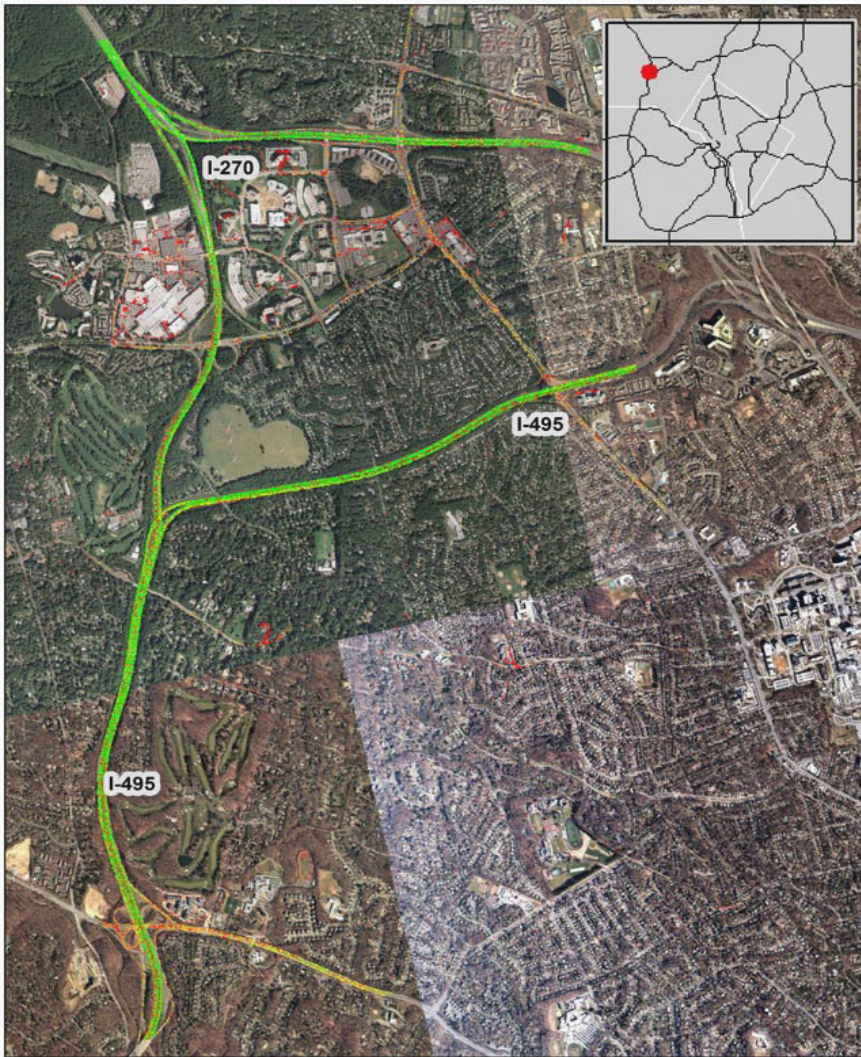


Washington, DC: I-495 at I-270 (East)



Summary

National Ranking by Congestion Index	99
Average Speed	45.5
Peak Average Speed	29.6
Nonpeak Average Speed	51.0
Nonpeak/Peak Ratio	1.7
Peak Average Speed Percent Change 2017 - 2018	-3.62%

Average Speed by Time of Day I-495 at I-270 (East)

