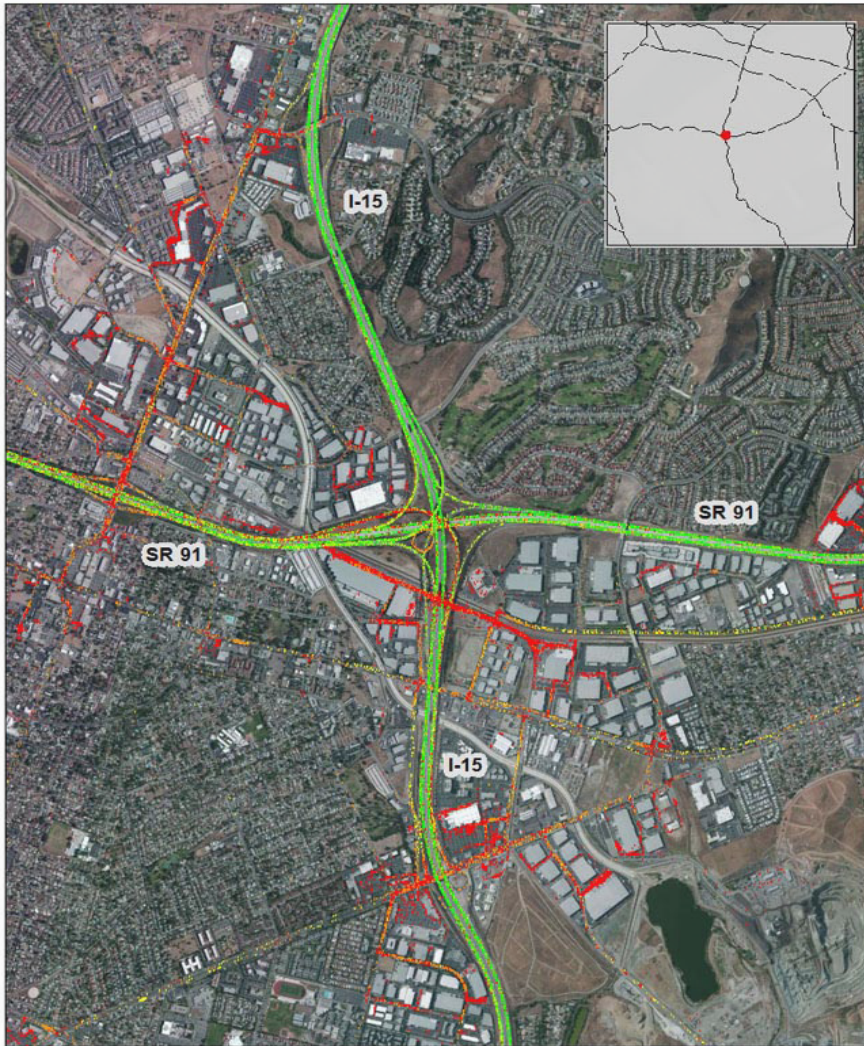


Corona, CA: I-15 at SR 91



Summary

National Ranking by Congestion Index	45
Average Speed	38.8
Peak Average Speed	29.9
Nonpeak Average Speed	42.5
Nonpeak/Peak Ratio	1.4
Peak Average Speed Percent Change 2017 - 2018	2.44%

Average Speed by Time of Day I-15 at SR 91

