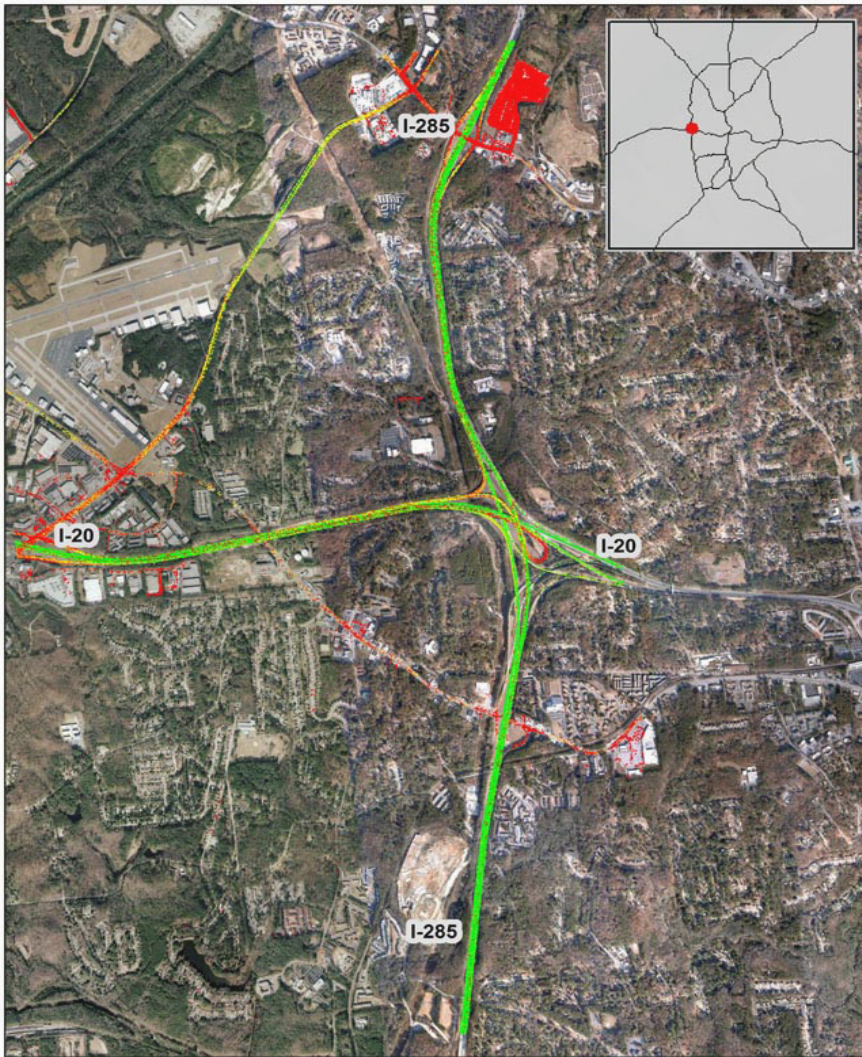


Atlanta, GA: I-20 at I-285 (West)



Summary

National Ranking by Congestion Index	17
Average Speed	46.4
Peak Average Speed	40.3
Nonpeak Average Speed	48.8
Nonpeak/Peak Ratio	1.2
Peak Average Speed Percent Change 2017 - 2018	-1.03%

Average Speed by Time of Day I-20 at I-285 (West)

