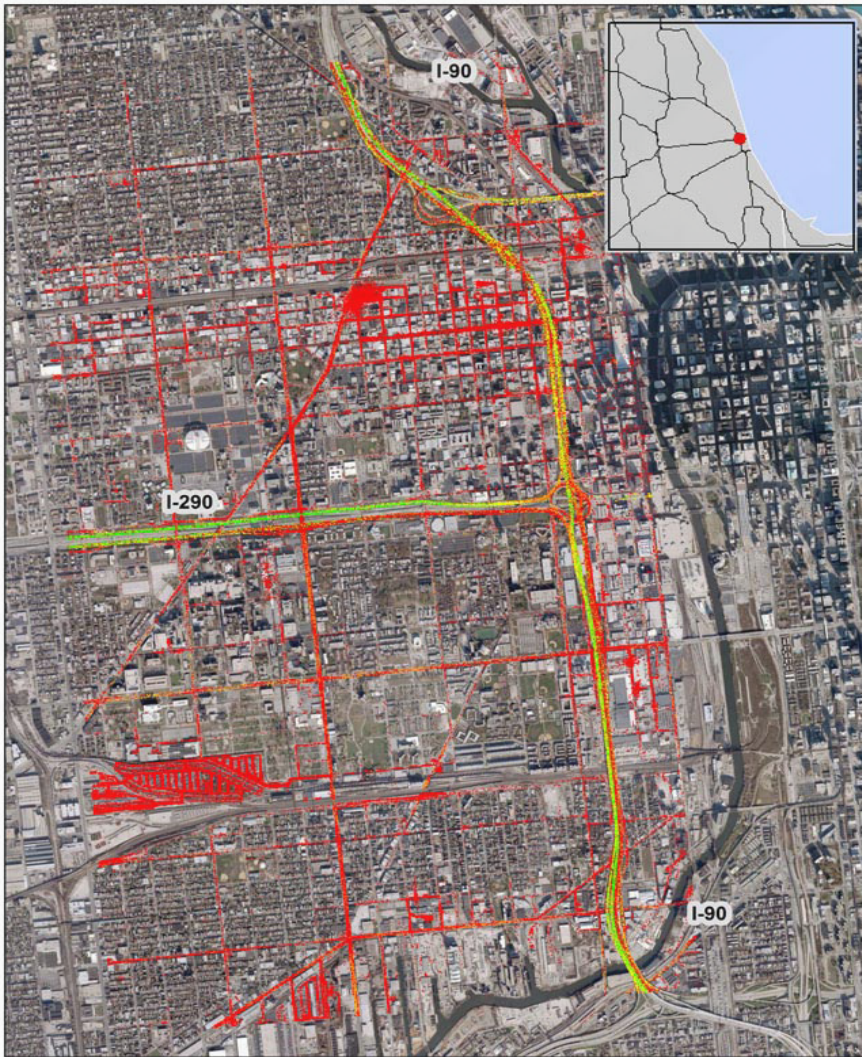


Chicago, IL: I-290 at I-90/I-94



Summary

| | |
|---|--------|
| National Ranking by Congestion Index | 3 |
| Average Speed | 25.9 |
| Peak Average Speed | 21.2 |
| Nonpeak Average Speed | 27.7 |
| Nonpeak/Peak Ratio | 1.3 |
| Peak Average Speed Percent Change 2017 - 2018 | -4.70% |

Average Speed by Time of Day I-290 at I-90/I-94

