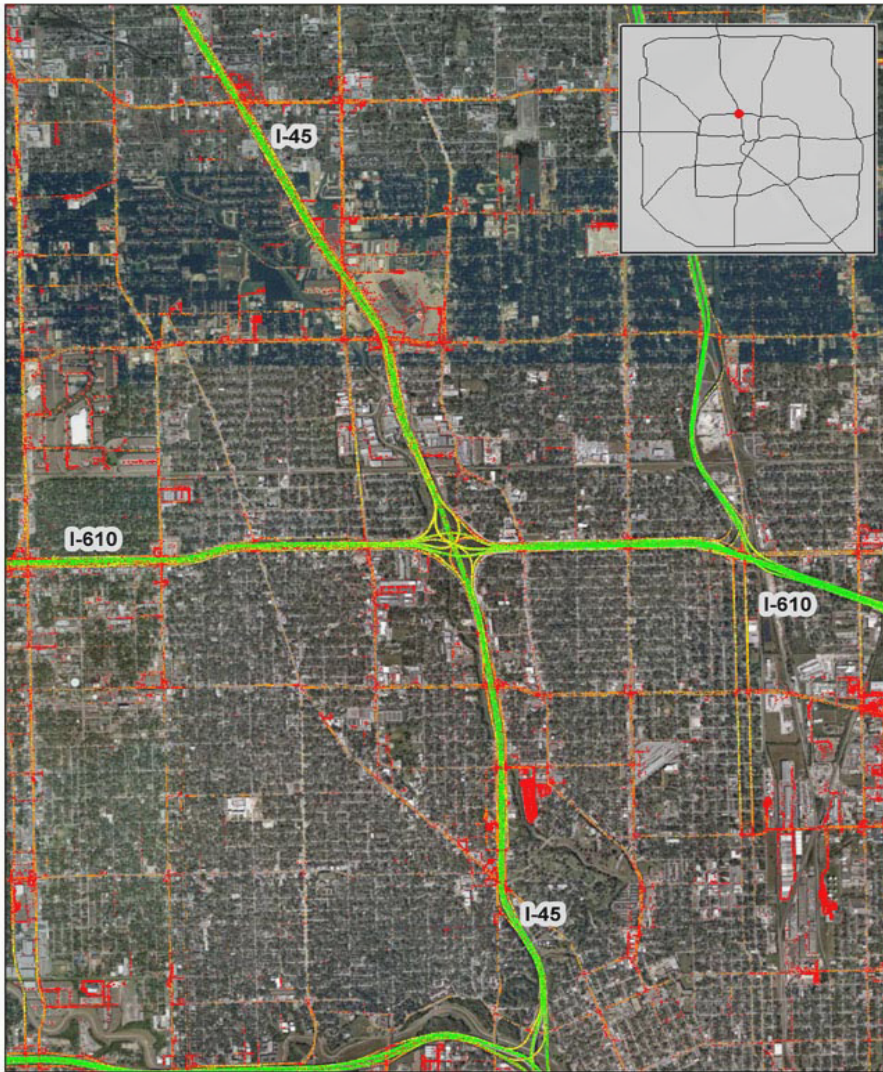


Houston, TX: I-45 at I-610 (North)



Summary

| | |
|--------------------------------------|------|
| National Ranking by Congestion Index | 25 |
| Average Speed | 46 |
| Peak Average Speed | 35 |
| Nonpeak Average Speed | 50 |
| Nonpeak/Peak Ratio | 1.44 |

Average Speed by Time of Day I-45 at I-610 (North)

