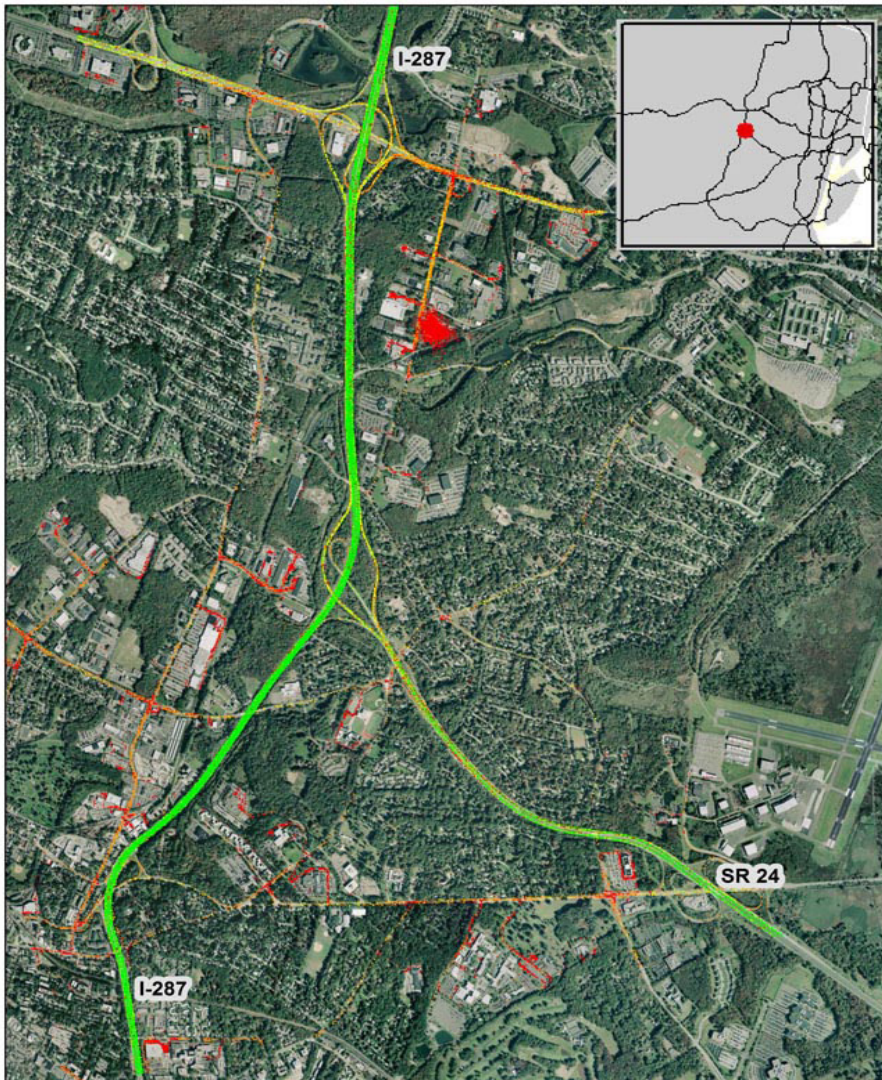


# Morristown, NJ: I-287 at SR 24



## Summary

<b>National Ranking by Congestion Index</b>	<b>97</b>
<b>Average Speed</b>	<b>50</b>
<b>Peak Average Speed</b>	<b>42</b>
<b>Nonpeak Average Speed</b>	<b>54</b>
<b>Nonpeak/Peak Ratio</b>	<b>1.29</b>

**Average Speed by Time of Day  
I-287 at SR 24**

